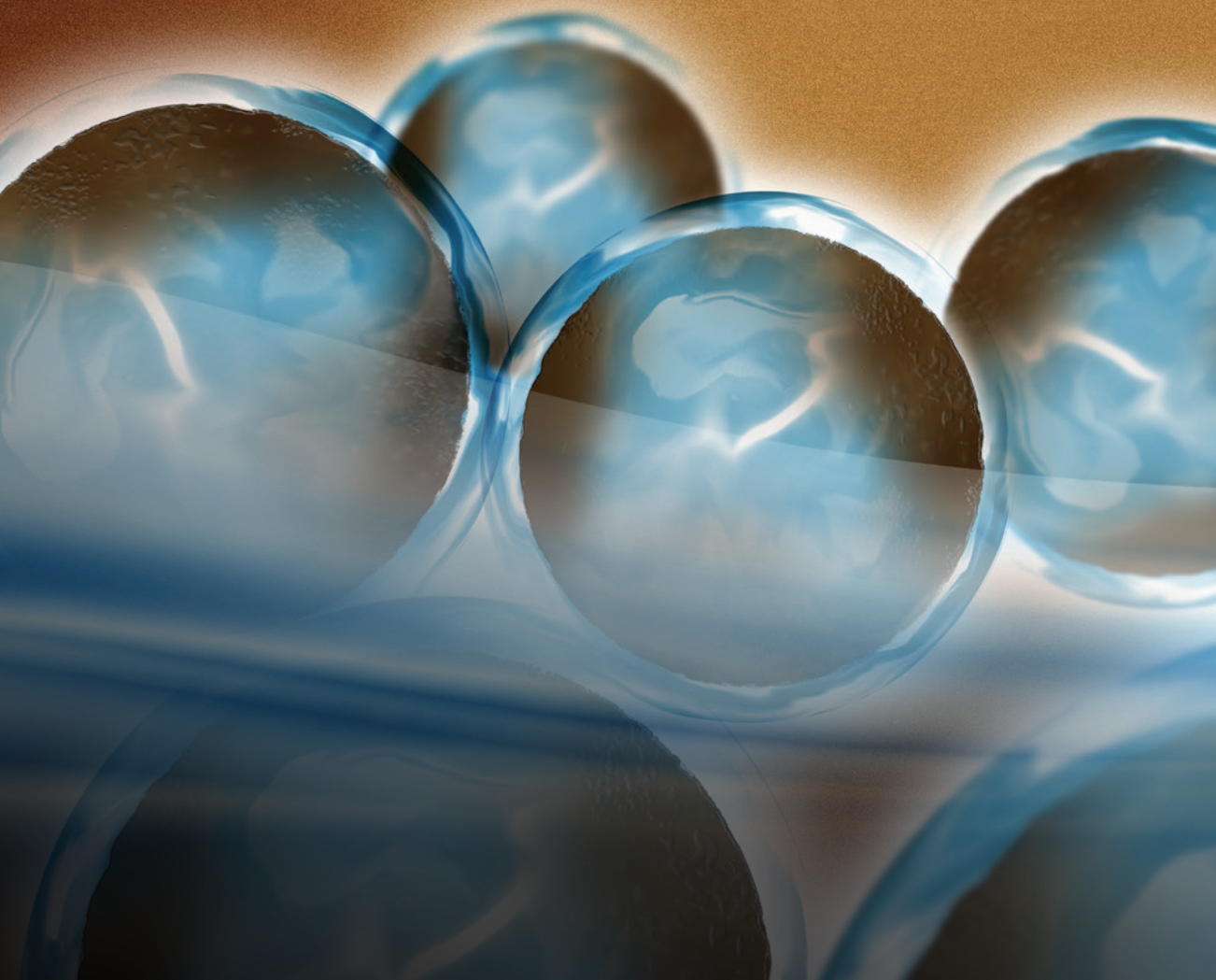


DEEPER THINKING

Qualibra[®] helps in the management of water in turfgrass root zones, and to help prevent dry patch or localised dry spot.

Benefits

- ✓ Maintain plant health and playing surface quality during periods of drought
- ✓ Prevent damaging dry patch developing
- ✓ Retain healthy turfgrass root mass



 **Qualibra**[®]
Wetting agent

syngenta[®]

Product

- **Formulation type:** Liquid
- **Technology:** Wetting and water conservation agent
- **Pack size:** 10, 200 and 500 litres
- **Mode of action:** Penetrant and polymer

Recommended period of use

Apply before and during periods of drought for best results

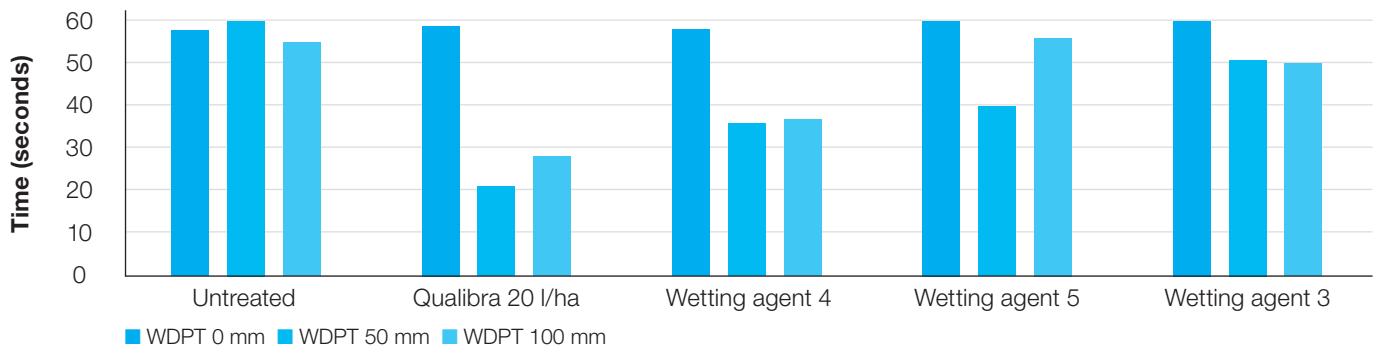


Application information

- **Application rate:** 20 l/ha
- **Greens application rate:** 20 l/ha
- **Fairway application rate:** 10 - 15 l/ha
- **Recommended application interval:** 4 weeks
- **Water volume:** 600 - 1000 l/ha
- **Irrigation after application:** 2 - 3 mm



Actual soil water repellency (WDPT test) at 0, 50 and 100 mm – Royal Liverpool Golf Course 2013



Soil volumetric moisture content under irrigation scheme at <20% VMC – STRI 2016

